

HBLT LIQUID LEVEL TRANSMITTER

for measuring liquid level
in refrigerant vessels

HBLT - A1 Level Transmitter

Capacitive liquid level transmitter designed for
the industrial refrigeration industry.

Well known in the field since 14+ years with
30.000+ transmitters installed World Wide.

Used for measuring liquid level on all types of
refrigeration installations.



Electronic part shown
with/without LED bargraph

We Know how

HB Products
your partner for
individual positioning
and sensing solutions

Your Sensor Specialist
www.hbproducts.dk



HB

Products

POSITION & LEVEL SENSORS

HBLT capacitive liquid level transmitter designed for the refrigeration industry.

HBLT-A1 Level Transmitters offers a reliable active 4-20mA signal proportional to the refrigerant level which in conjunction with a controller is to control the liquid level in vessels.

PROCESS AUTOMATION

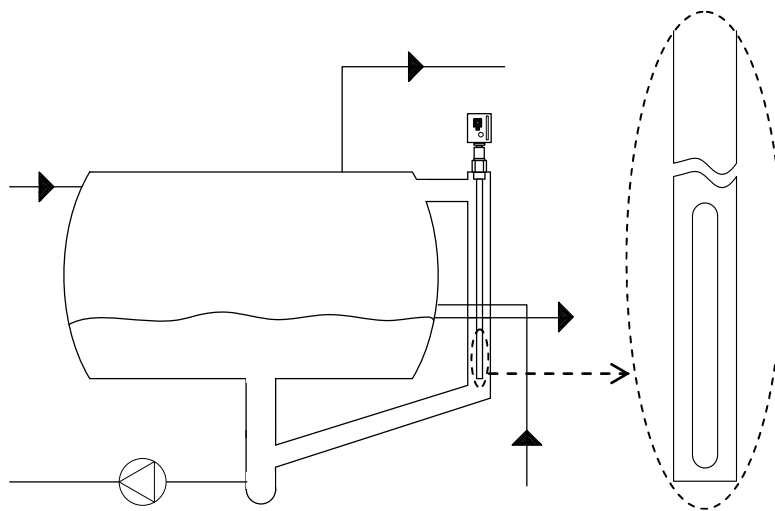
Applications:

- Analog level control
- Alarm high and low level

Advantages:

- No moving parts
- Service friendly: electronic head and ref. tube/sleeve can be separated without emptying the vessel.
- Damping of output signal
- Plug and Play with ref. tube/sleeve: no calibration required.
- LED Bargraph as option
- Transcritical CO₂ transmitter available

HBLT - A1 → 'A1' Level Transmitter



Improvements:

- ref.tube/sleeve re-designed to be less influenced by accumulating oil
- software updated securing more accurate measuring

Note: slope on connection pipe prevents accumulation of oil in standpipe.

SPECIFICATIONS:

Power supply:	24V DC
Output:	4-20mA
Liquid/media:	NH ₃ , HFC's & CO ₂
Indication:	LED-bargraph*
Media temp.:	-60...to +120deg.C -76...to +212deg.F
Material:	AISI304 / 316 / PTFE
Mech. connection:	3/4" NPT or 1" BSP
EMC test:	EN 61000-3-2 EN 61000-4-2
Pressure:	100bar / 1450 PSI**
Measuring range:	80...3.000 mm 3.1...118 inch

* as option

** transcritical CO₂ transmitter available

ORDERING CODE:

HBLT - A1	-	-	-
			Mech.connection: - = 1" BSP (G1) U = 3/4" NPT
			Sensor length: 80... 3000mm 3.1... 118 inch
			Visual indication: - = non B = bargraph

DISTRIBUTOR:

Manufactured by:

